



 **CENTENNIAL LAKES**  
**OFFICE PARK**

[centenniallakes.com](http://centenniallakes.com)

WATCH  THE VIDEO



Centennial Lakes Office Park

7650 Edinborough Way Suite 175  
Edina, MN 55435

Development by

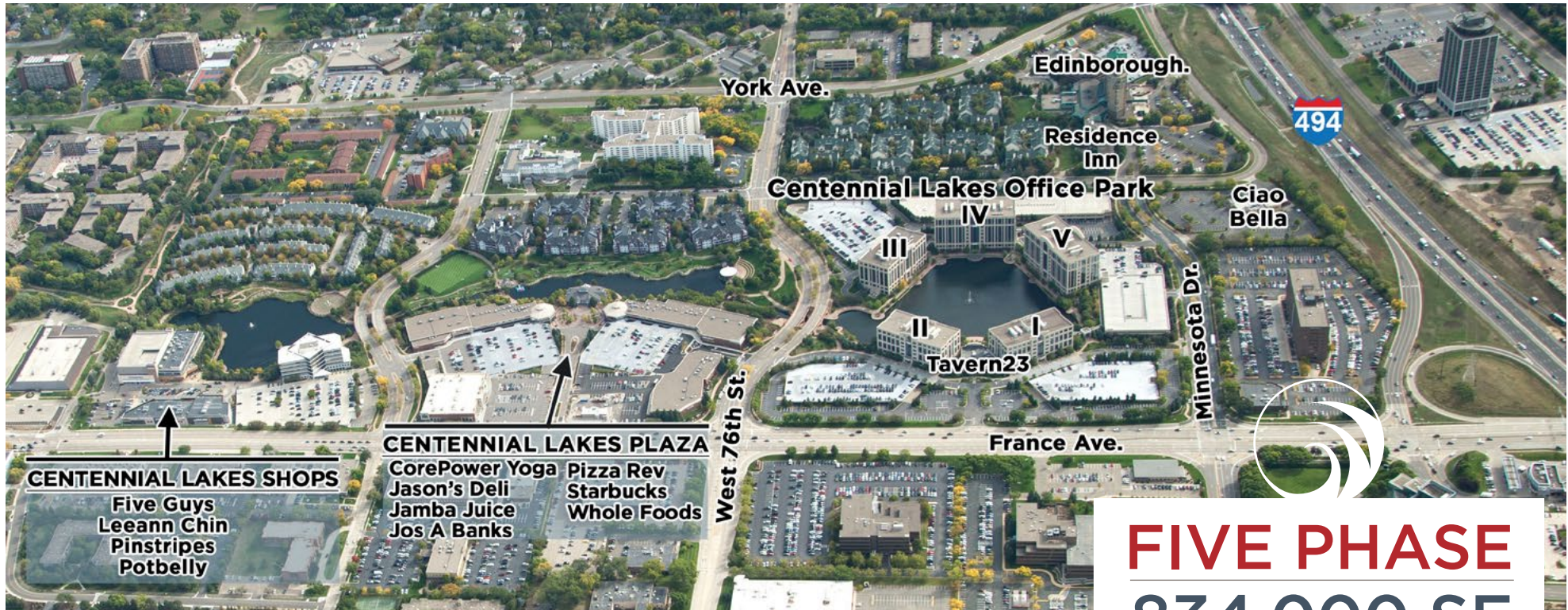


Leasing by



Bob Revoir | 952-893-7586  
[bob.revoir@cushwake.com](mailto:bob.revoir@cushwake.com)

Dan Wicker | 952-893-8254  
[dan.wicker@cushwake.com](mailto:dan.wicker@cushwake.com)



# FIVE PHASE 834,000 SF

## PREMIER CLASS A OFFICE

Occupancy	95% Leased
Floor Plates	22,000-26,000
Year Built	1997-2000
Parking Ratio	<ul style="list-style-type: none"> <li>• 4.05 stalls/1,000sf</li> <li>• Ramp and reserved parking</li> </ul>

### ON-SITE AMENITIES

- Free, fully equipped conference rooms (in each building) with seating for 22-60 people
- Tavern23 Restaurant and patio • [tavern23mn.com](http://tavern23mn.com)
- Mykenna's café serving breakfast and lunch (Phase IV)
- Convenience store (Phase V)
- On-site property management
- Security guard service 24/7
- Concierge Service
- Electric car charging stations (Phase III)
- Locker rooms/showers (Phase II, IV, V)
- BOMA 360 Designated Building

### AMENITIES ADJACENT TO THE PARK

- City of Edina's Centennial Lakes Park which consists of 24 acres, 1.5 miles of paved walking paths, amphitheater, paddle boat rental, ice skating, bent grass putting green & lawn games
- Complete fitness center (pool and full gym) at Edinborough Park
- More than 20 dining and fast casual options located within 1 mile of the park
- Adjacent to Nine Mile Regional Bike Trail
- Nearby hotels: The Westin Edina Galleria, Hilton, and Residence Inn

centenniallakes.com



CLICK A SUITE NUMBER TO SEE FLOOR PLAN

**CENTENNIAL LAKES I**

7701 France Avenue

**Suite 225** | 3,871 sf

**Suite 400** | 5,506 sf  
(avail. 7/1/2018)

**CENTENNIAL LAKES II**

7601 France Avenue

**CENTENNIAL LAKES III**

3601 76th Street West

**Suite 20** | 3,801 sf

**Suite 275** | 4,198 sf

**Suite 300** | 22,340 sf  
(avail. 10/1/2018)

**Suite 450** | 14,297 sf  
(avail. 10/1/2018)

**CENTENNIAL LAKES IV**

7560 Edinborough Way

**Suite 200-275** | 15,288 sf

**Suite 400/450** | 18,571 sf

**CENTENNIAL LAKES V**

3600 Minnesota Drive

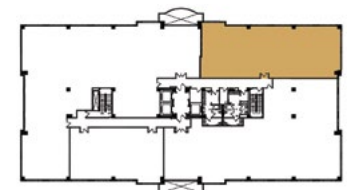
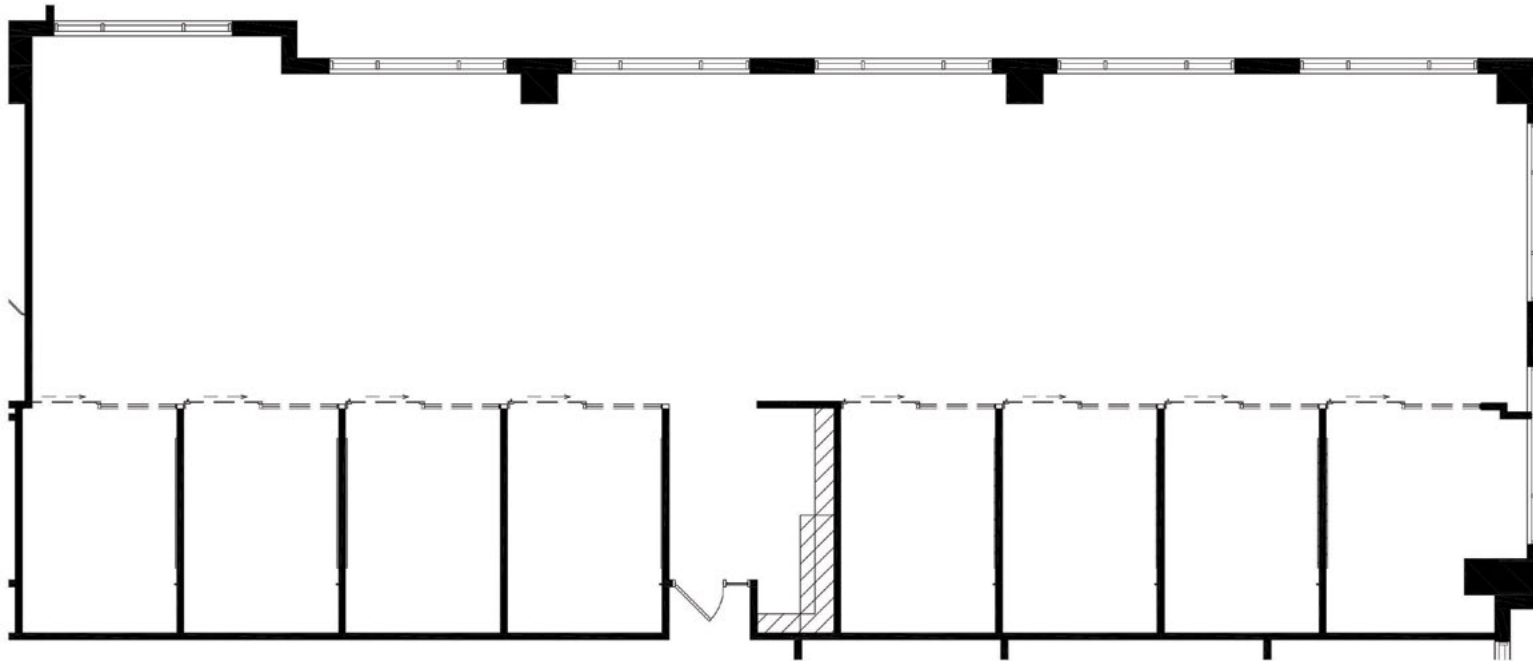
**Suite 70** | 6,623 sf

**Suite 515** | 5,541 sf  
(avail. 8/1/2018)

centenniallakes.com

**CENTENNIAL LAKES I**  
7700 France Avenue South

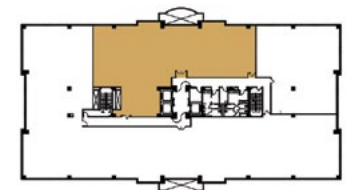
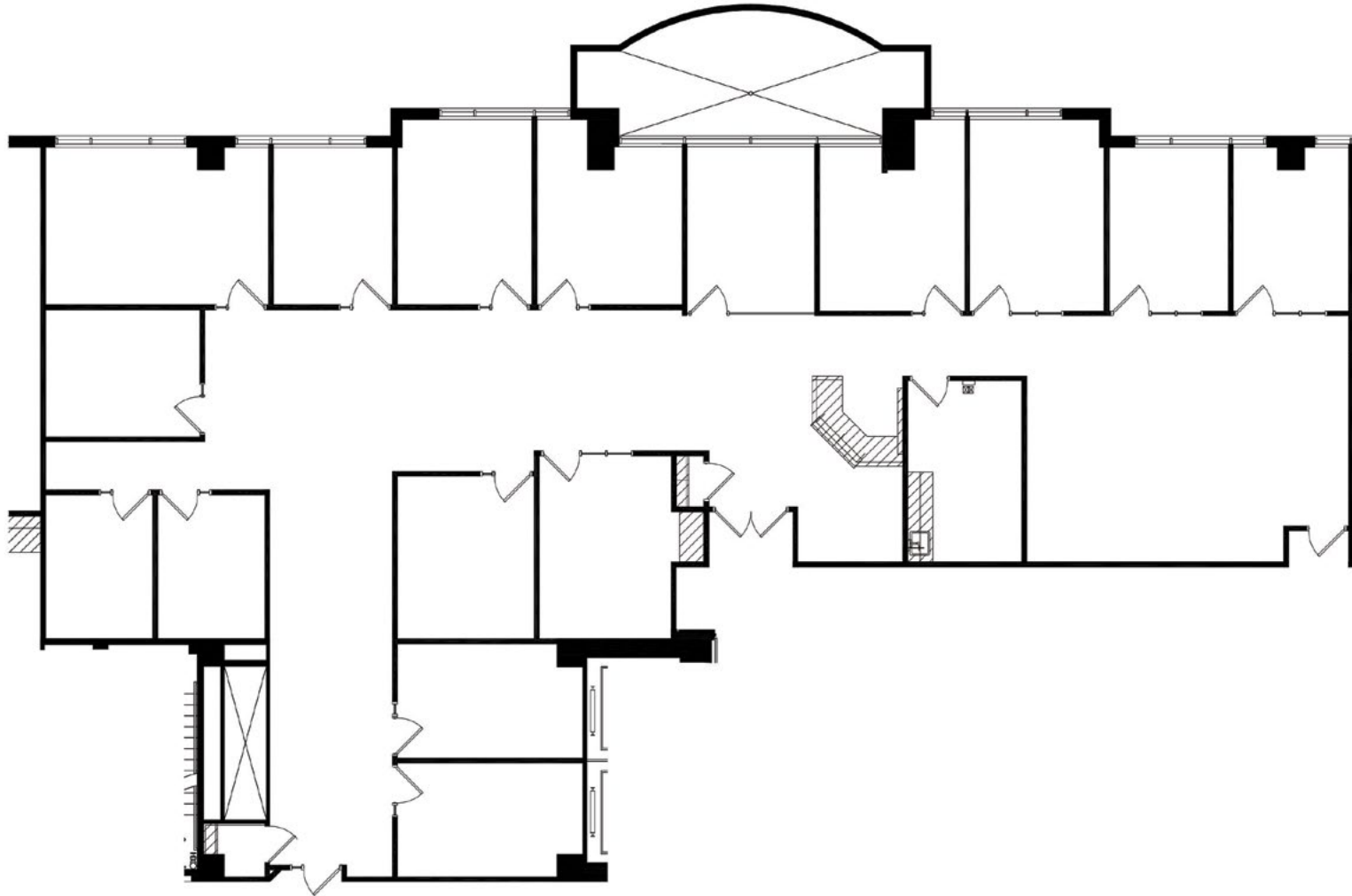
Suite 225 | 3,871 sf



KEY PLAN - 2ND FLOOR

**CENTENNIAL LAKES I**  
7700 France Avenue South

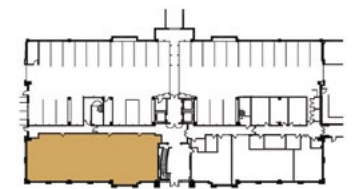
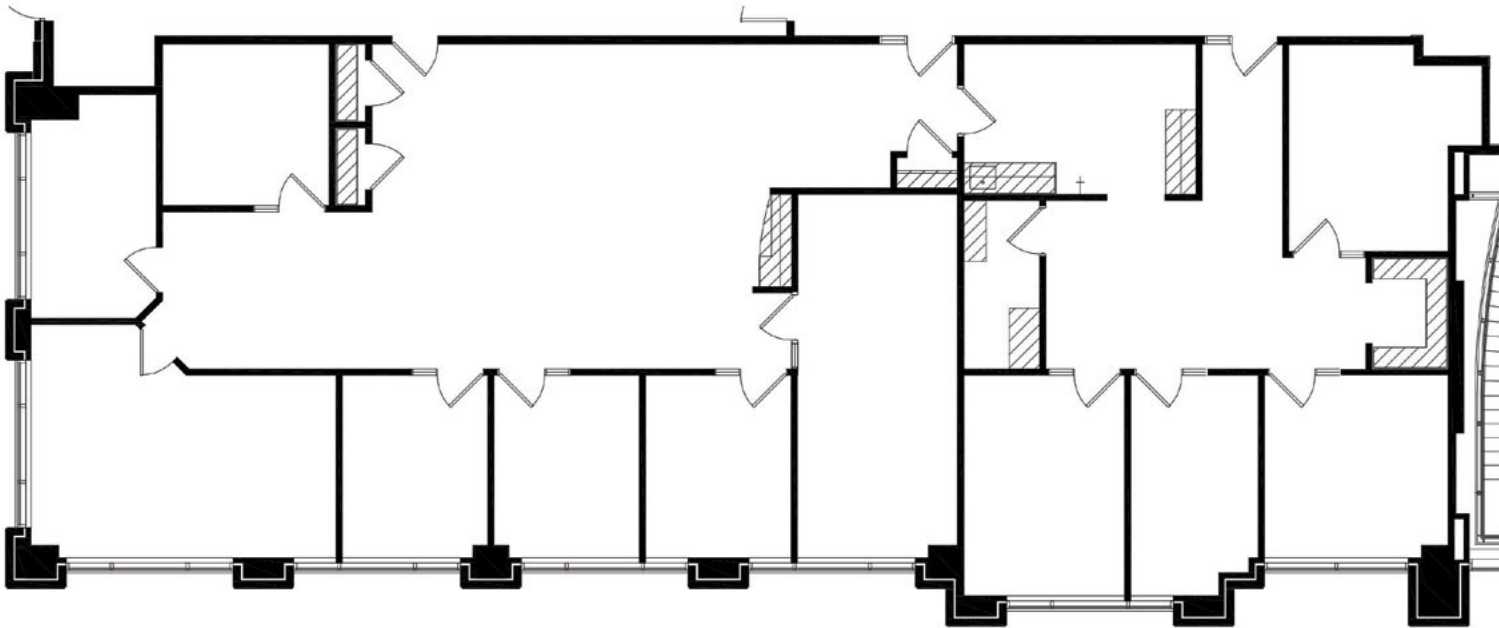
**Suite 400** | 5,506 sf  
(available 7/1/2018)



KEY PLAN - 4TH FLOOR

CENTENNIAL LAKES III  
3601 West 78th Street

Suite 20 | 3,801 sf

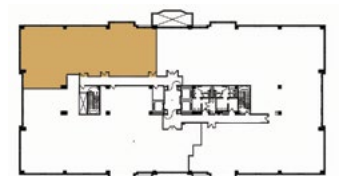
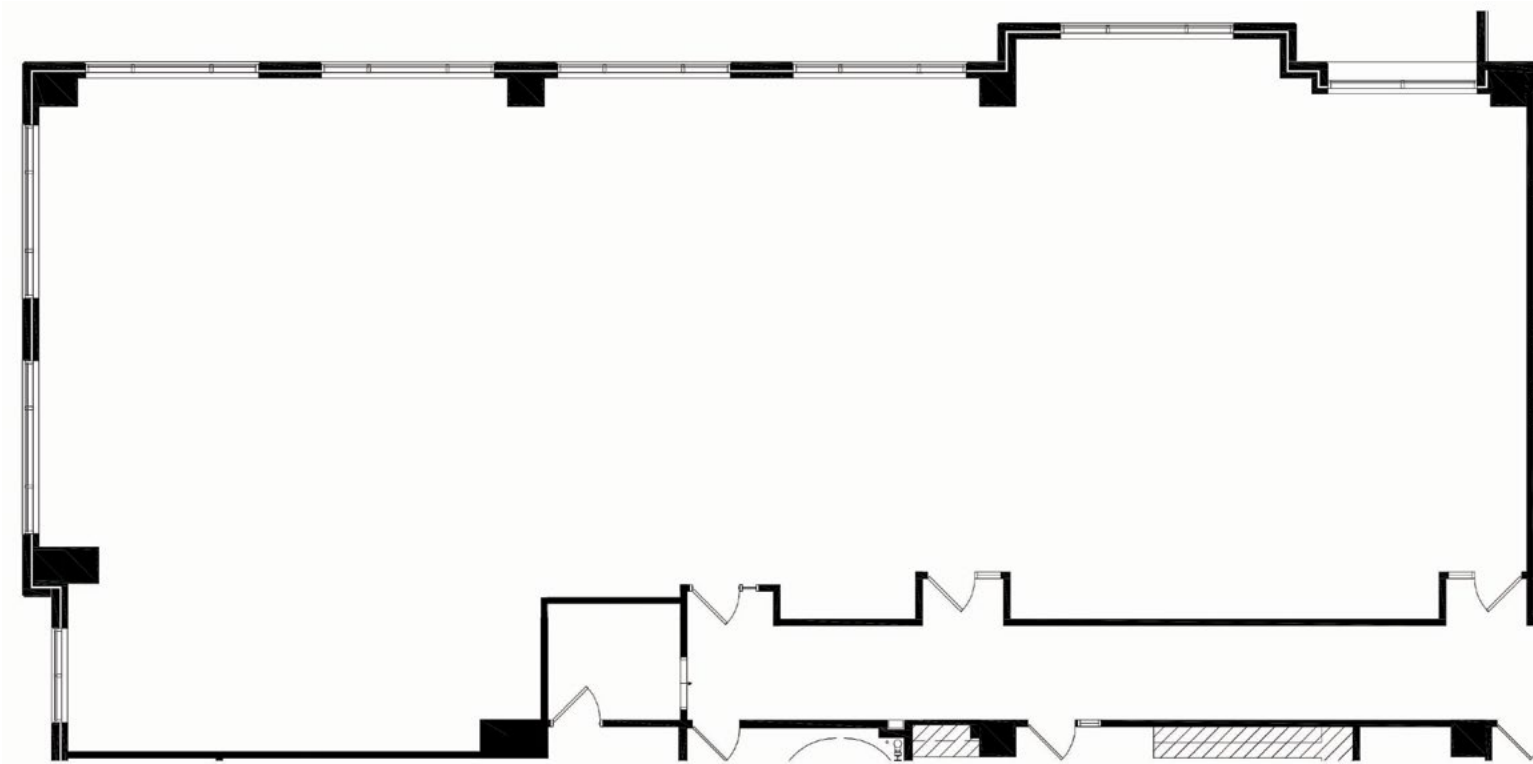


KEY PLAN - LOWER LEVEL

CENTENNIAL LAKES III

3601 West 78th Street

Suite 275 | 4,198 sf

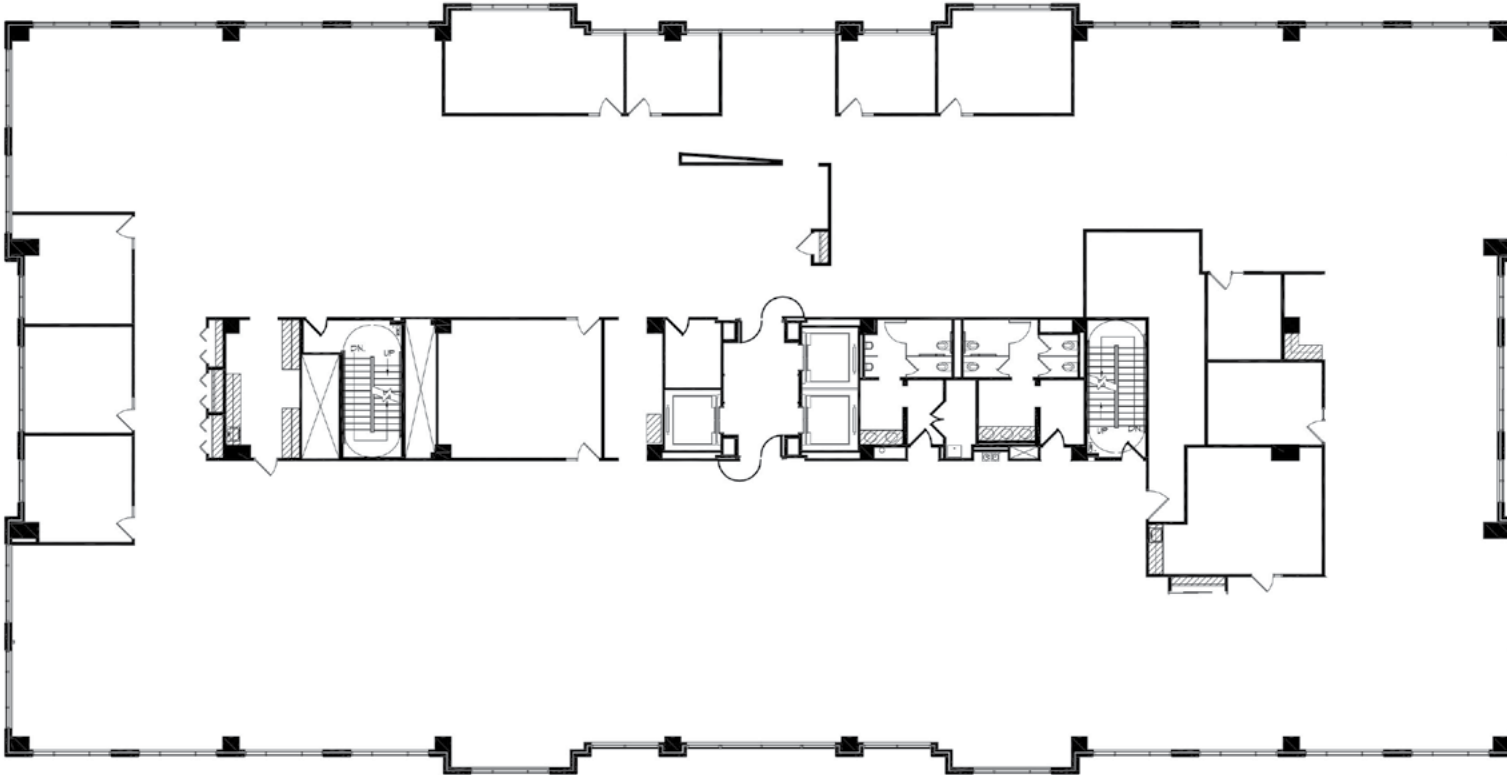


KEY PLAN - 2ND FLOOR

CENTENNIAL LAKES III

3601 West 78th Street

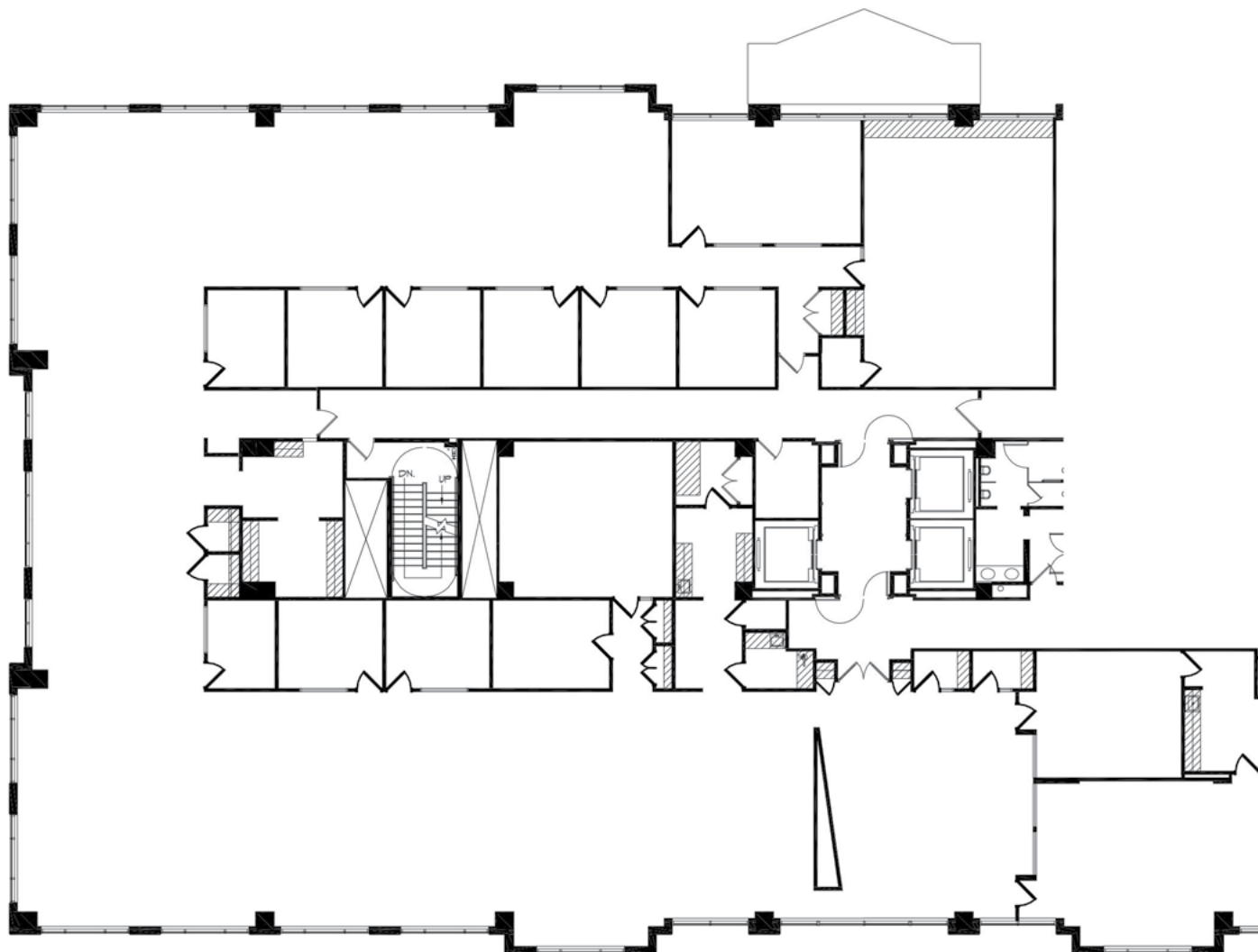
Suite 300 | 22,340 sf  
(available 10/1/2018)





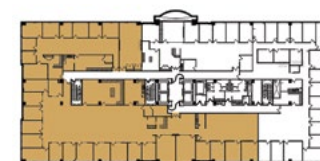
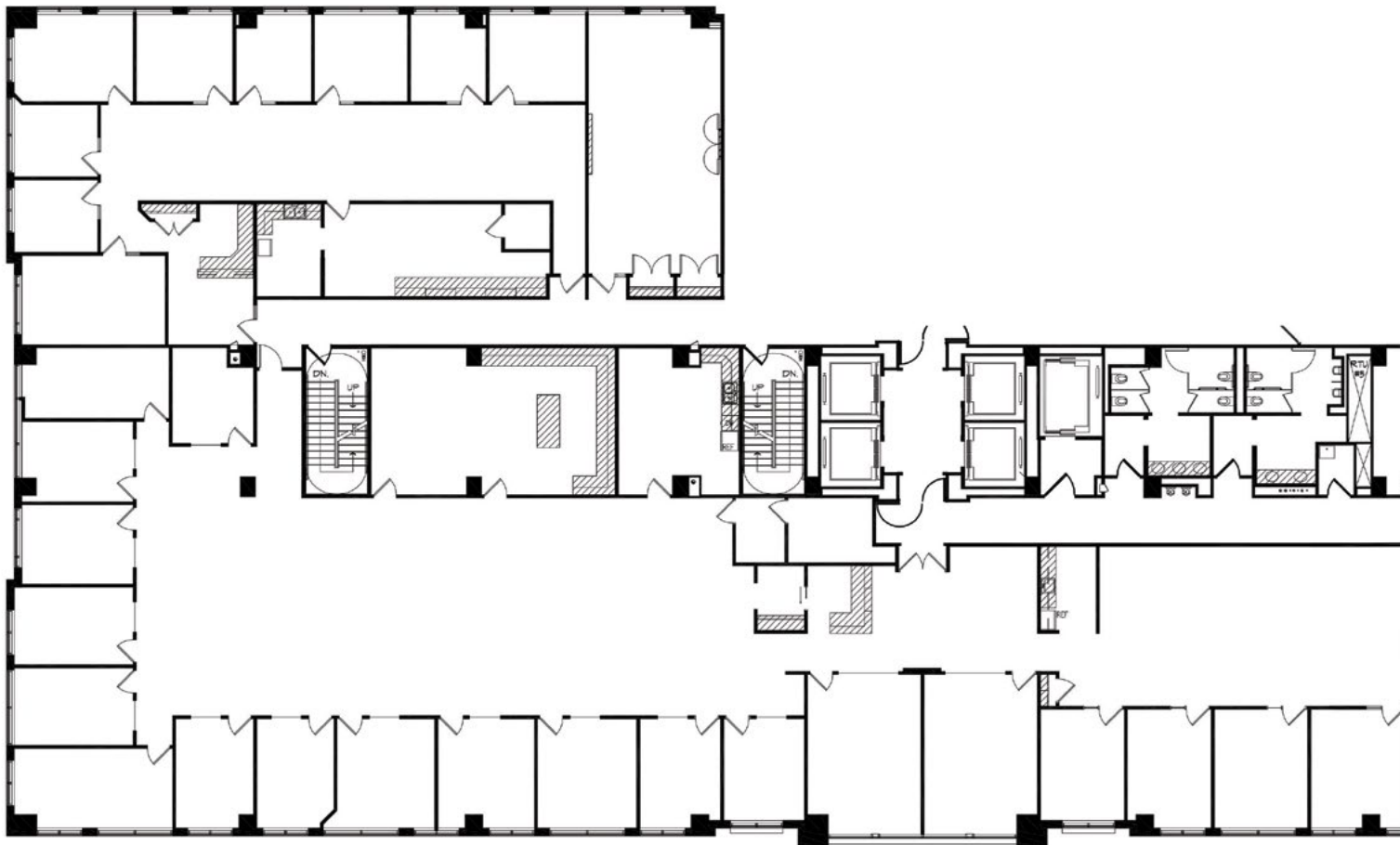
**CENTENNIAL LAKES III**  
3601 West 78th Street

**Suite 450** | 14,297 sf  
(available 10/1/2018)



**CENTENNIAL LAKES IV**  
7650 Edinborough Way

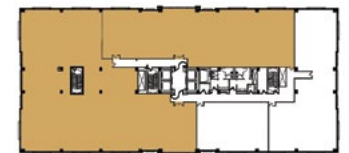
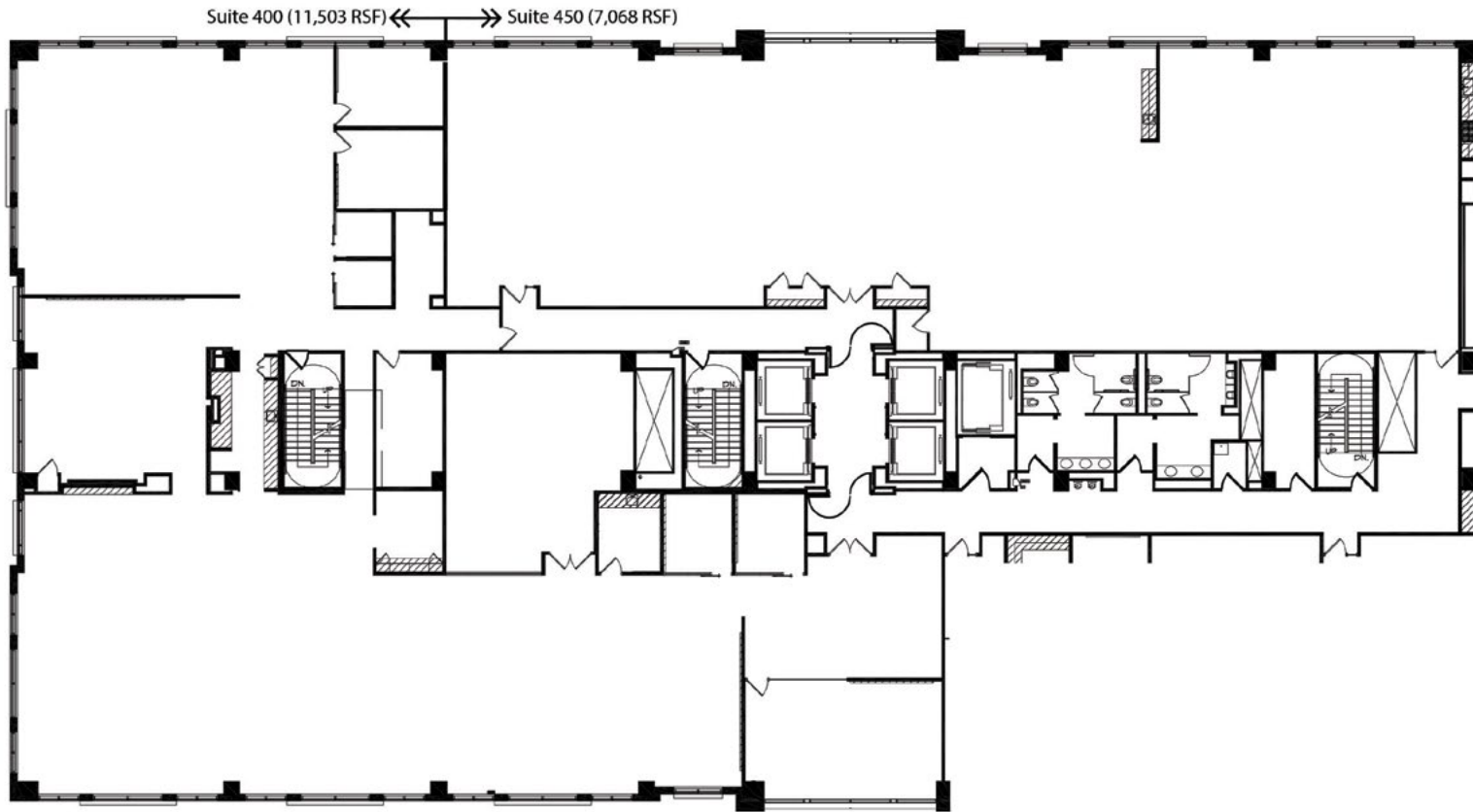
Suite 200-275 | 15,288 sf



KEY PLAN - 2ND FLOOR

CENTENNIAL LAKES IV  
7650 Edinborough Way

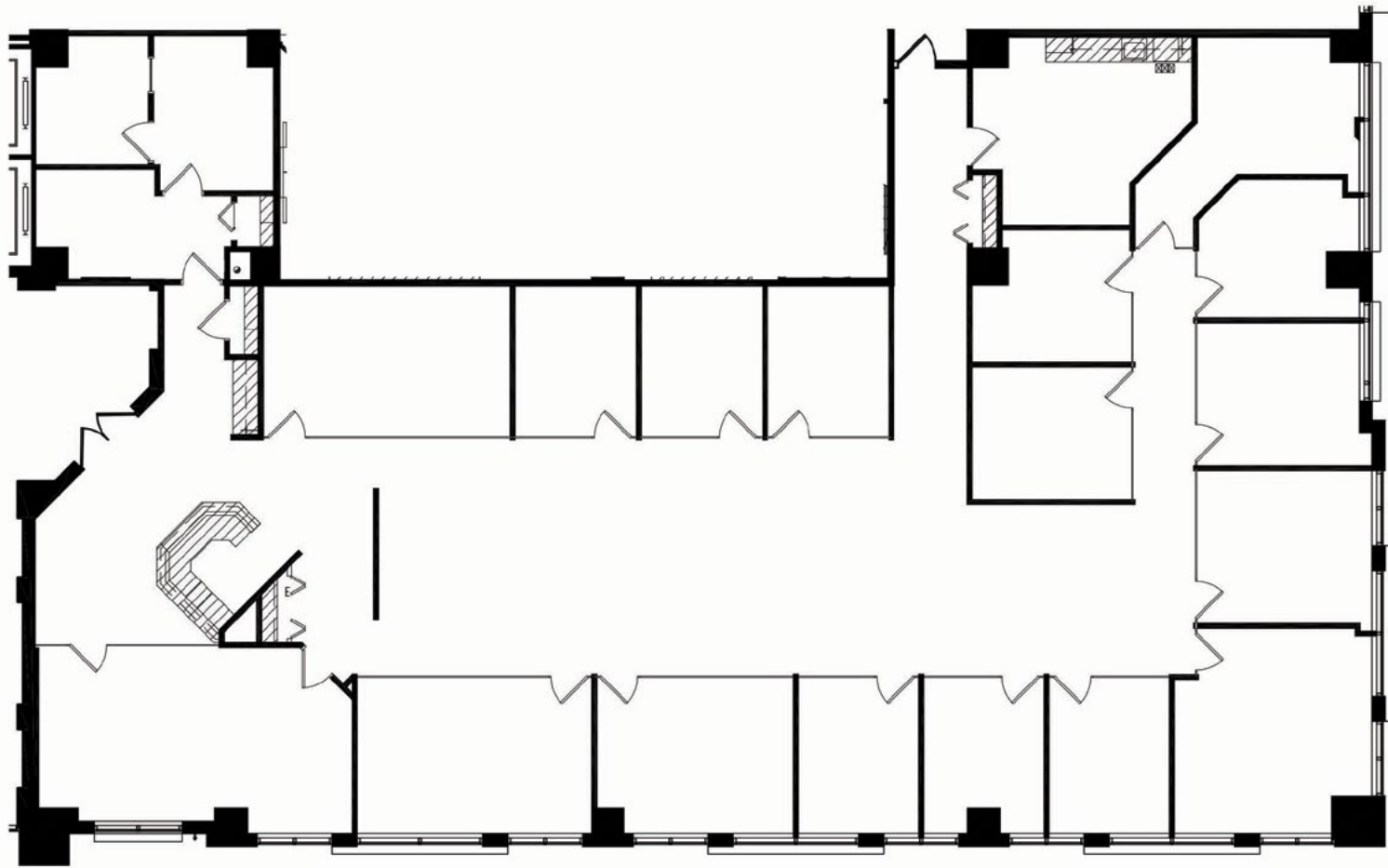
Suite 400/450 | 18,571 sf



KEY PLAN - 4TH FLOOR

CENTENNIAL LAKES V  
3600 Minnesota Drive

Suite 70 | 6,623 sf

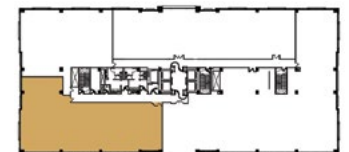
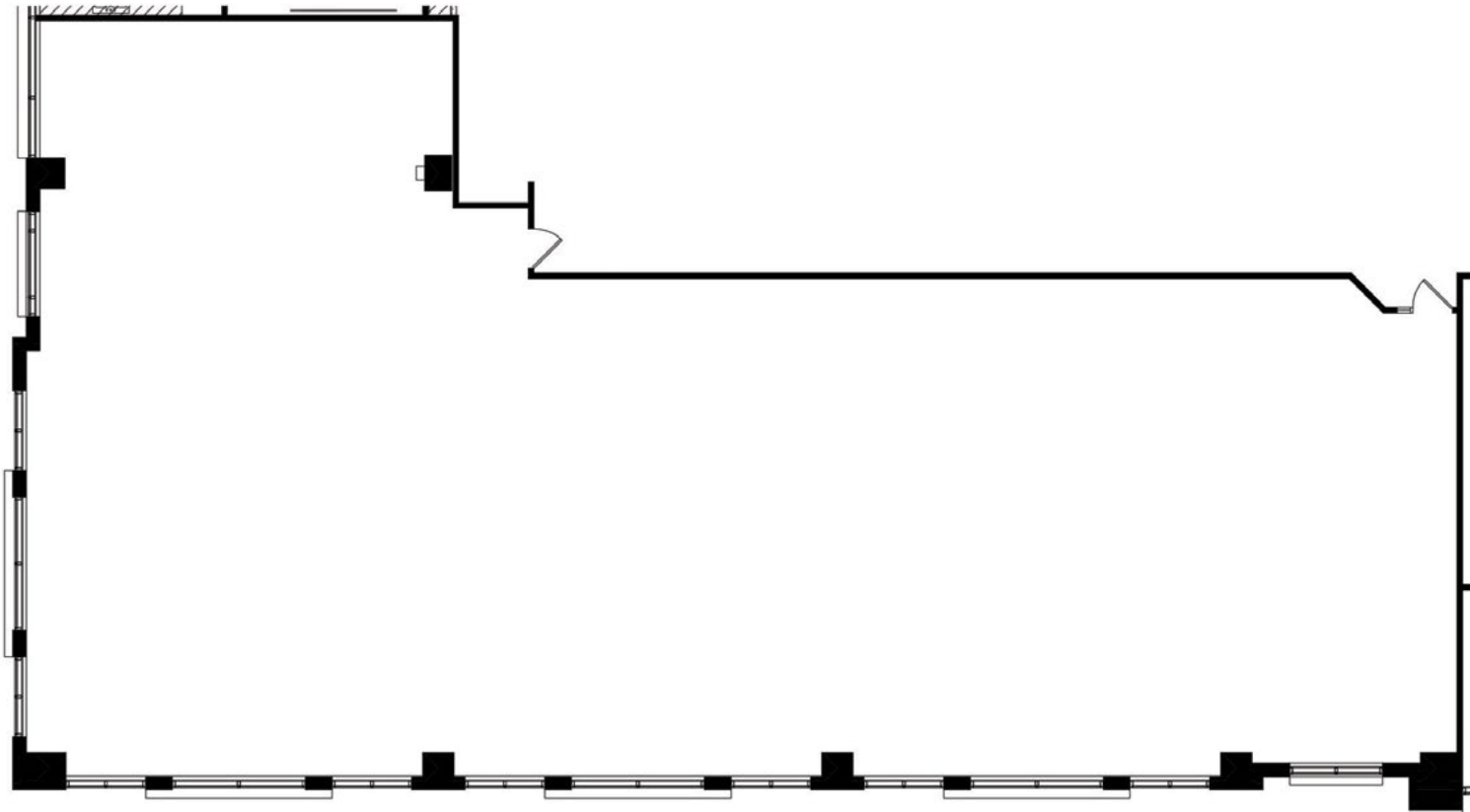


KEY PLAN - LOWER LEVEL

CENTENNIAL LAKES V

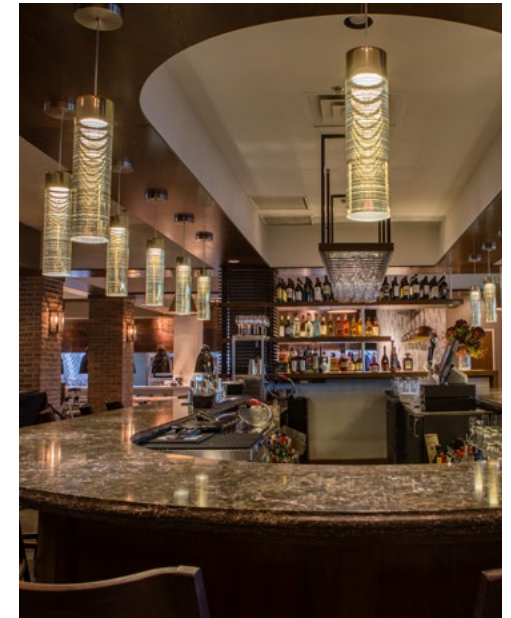
3600 Minnesota Drive

Suite 515 | 5,541 sf  
(available 8/1/2018)

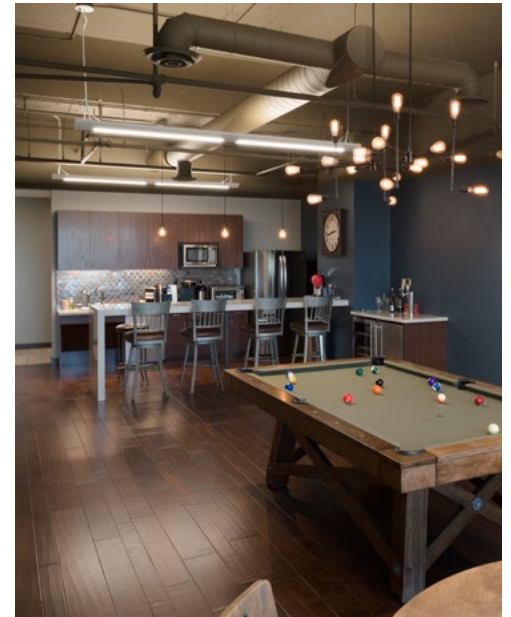


KEY PLAN - 5TH FLOOR





[centenniallakes.com](http://centenniallakes.com)





EDINA, MINNESOTA - 494 AND FRANCE AVENUE

[centenniallakes.com](http://centenniallakes.com)

Centennial Lakes Office Park  
7650 Edinborough Way | Suite 175 | Edina, MN 55435

Bob Revoir | 952-893-7586  
[bob.revoir@cushwake.com](mailto:bob.revoir@cushwake.com)

Dan Wicker | 952-893-8254  
[dan.wicker@cushwake.com](mailto:dan.wicker@cushwake.com)