



 **CENTENNIAL LAKES**
OFFICE PARK

centenniallakes.com

WATCH  THE VIDEO



Centennial Lakes Office Park

7650 Edinborough Way Suite 175
Edina, MN 55435

Development by



Leasing by



Bob Revoir | 952-893-7586
bob.revoir@cushwake.com

Dan Wicker | 952-893-8254
dan.wicker@cushwake.com



FIVE PHASE 834,000 SF

PREMIER CLASS A OFFICE

ON-SITE AMENITIES

- Free, fully equipped conference rooms (in each building) with seating for 22-60 people
- Tavern23 Restaurant and patio (tavern23mn.com)
- Mykenna's café serving breakfast and lunch (Phase IV)
- Convenience store (Phase V)
- On-site property management
- Security guard service 24/7
- Concierge Service
- Electric car charging stations (Phase III)
- Locker rooms/showers (Phase II, IV, V)
- BOMA 360 Designated Building

AMENITIES ADJACENT TO THE PARK

- City of Edina's Centennial Lakes Park which consists of 24 acres, 1.5 miles of paved walking paths, amphitheater, paddle boat rental, ice skating, 18-hole bent grass putting course & lawn games
- Complete fitness center (pool and full gym) at Edinborough Park
- More than 20 dining and fast casual options located within 1 mile of the park
- Adjacent to Nine Mile Regional Bike Trail
- Nearby hotels: The Westin Edina Galleria, Hilton, and Residence Inn

Occupancy	96% Leased
Floor Plates	22,000-26,000
Year Built	1997-2000
Parking Ratio	<ul style="list-style-type: none"> • 4.05 stalls/1,000 sf • Ramp and reserved parking

centenniallakes.com



CLICK A SUITE NUMBER TO SEE FLOOR PLAN

CENTENNIAL LAKES I

7701 France Avenue

Suite 250 | 7,015 sf

Suite 500 | 22,392 sf

CENTENNIAL LAKES II

7601 France Avenue

CENTENNIAL LAKES III

3601 West 76th Street

Suite 190 | 4,516 sf

Suite 400 | 9,483 sf

CENTENNIAL LAKES IV

7650 Edinborough Way

Suite 60 | 4,540 sf
(avail. 3/1/2024)

Suite 250 | 3,938 sf

Suite 645 Spec Suite | 5,883 sf

Suite 725 | 14,632 sf
(avail. 5/1/2024)

CENTENNIAL LAKES V

3600 Minnesota Drive

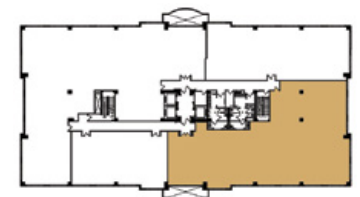
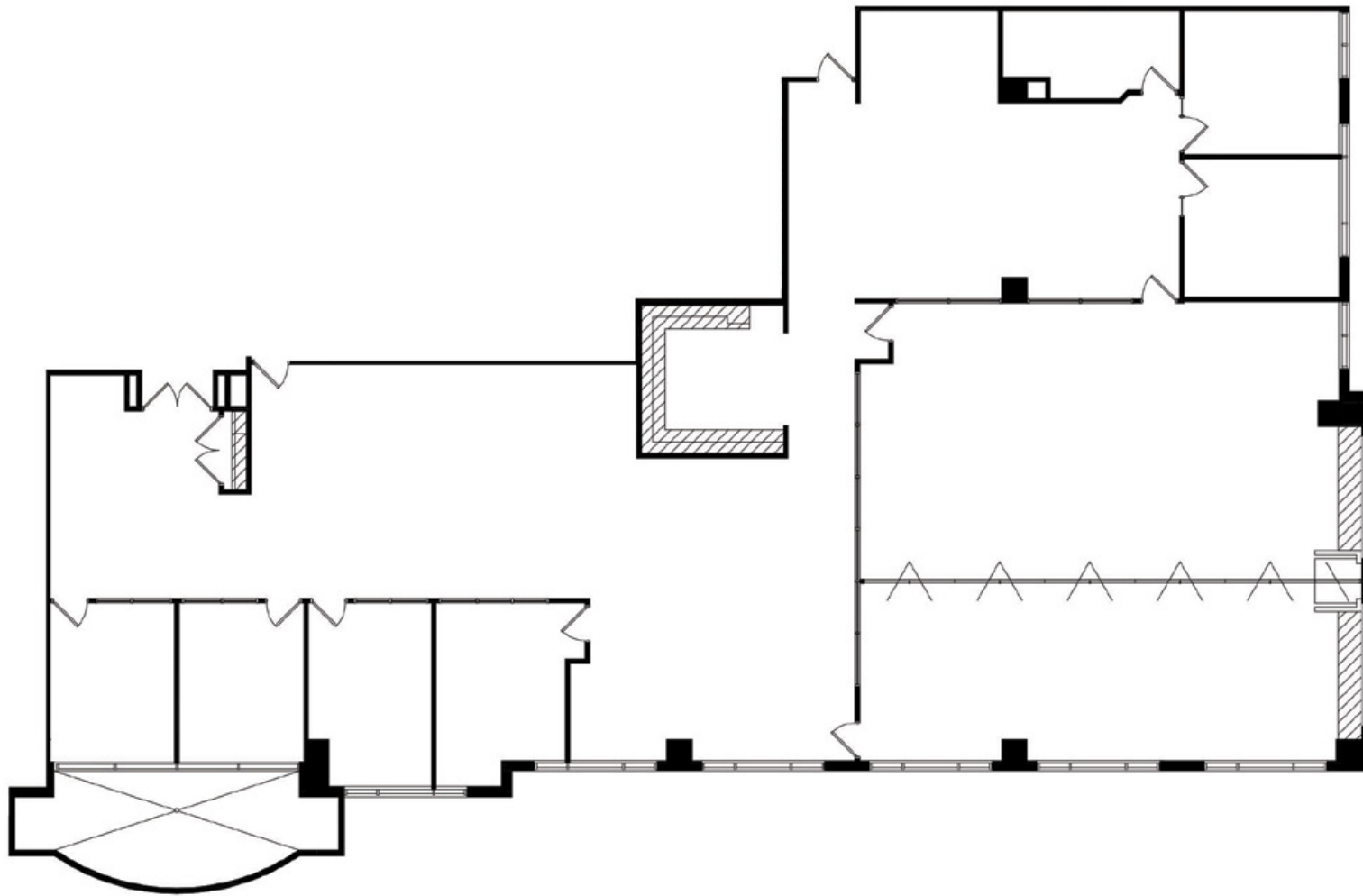
Suite 750 | 6,455 sf

Suite 850 | 9,694 sf

centenniallakes.com

CENTENNIAL LAKES I
7701 France Avenue South

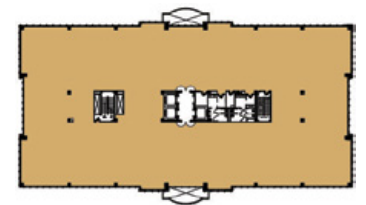
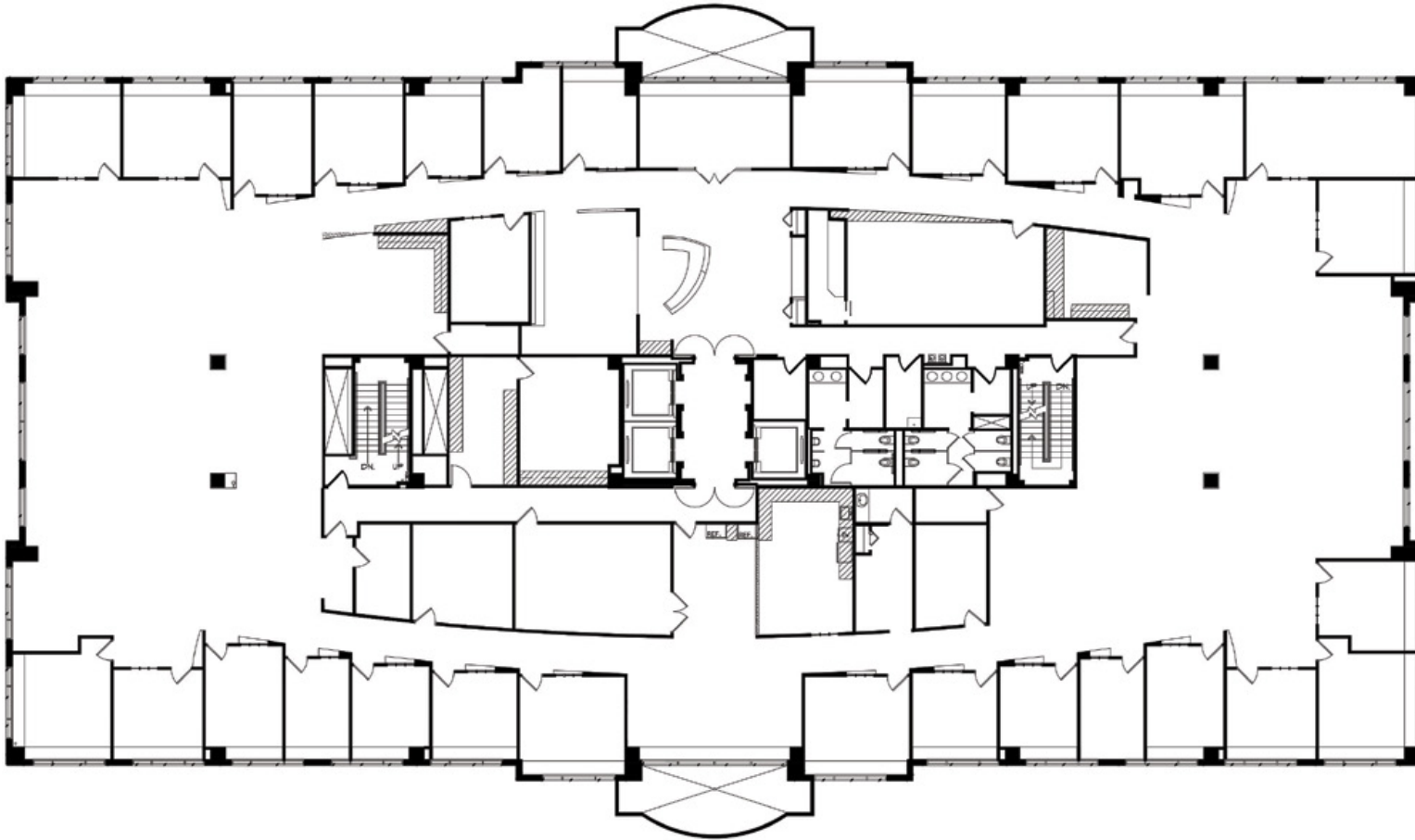
Suite 250 | 7,015 sf



KEY PLAN - 2ND FLOOR

CENTENNIAL LAKES I
7701 France Avenue South

Suite 500 | 22,392 sf

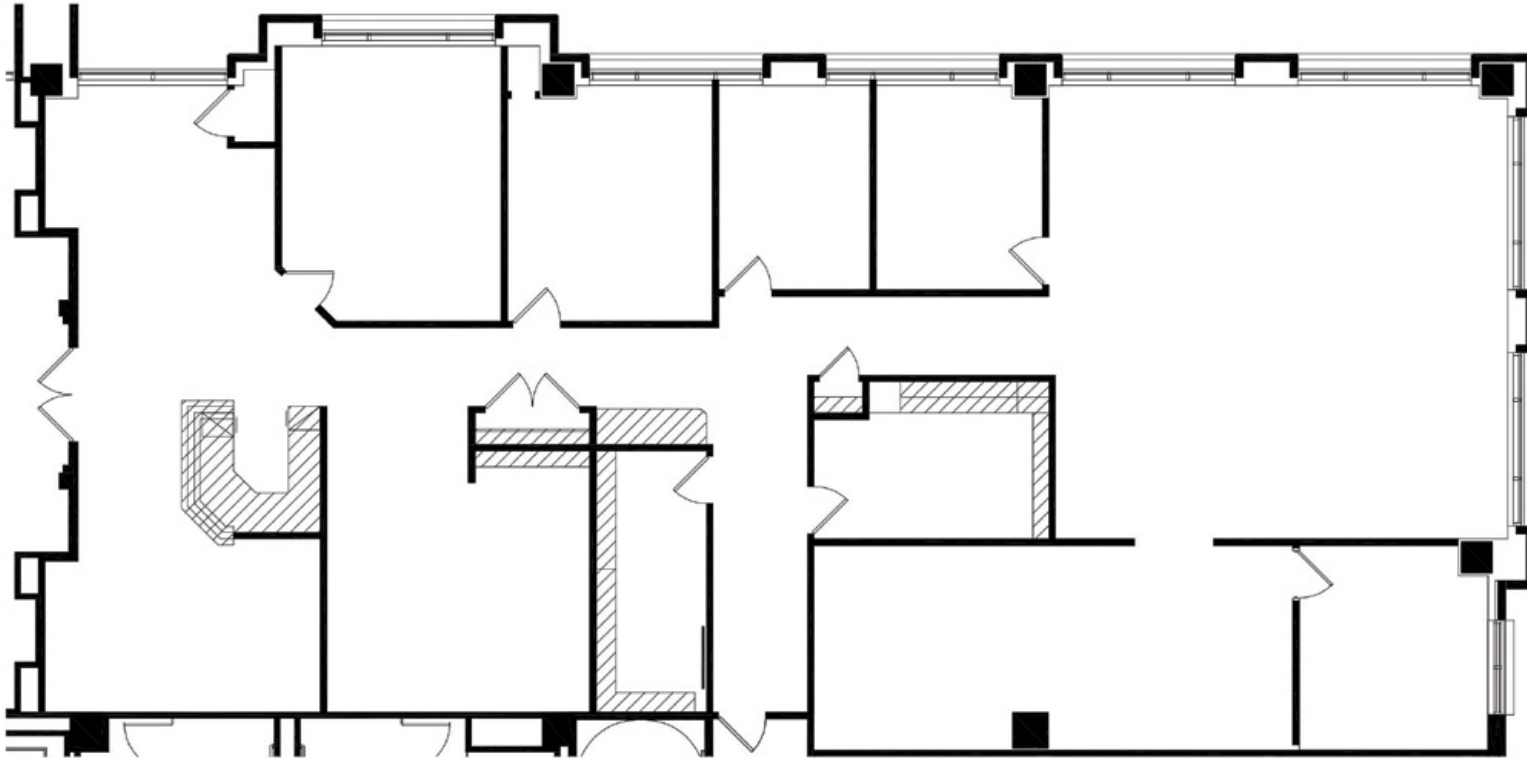


KEY PLAN - 5TH FLOOR

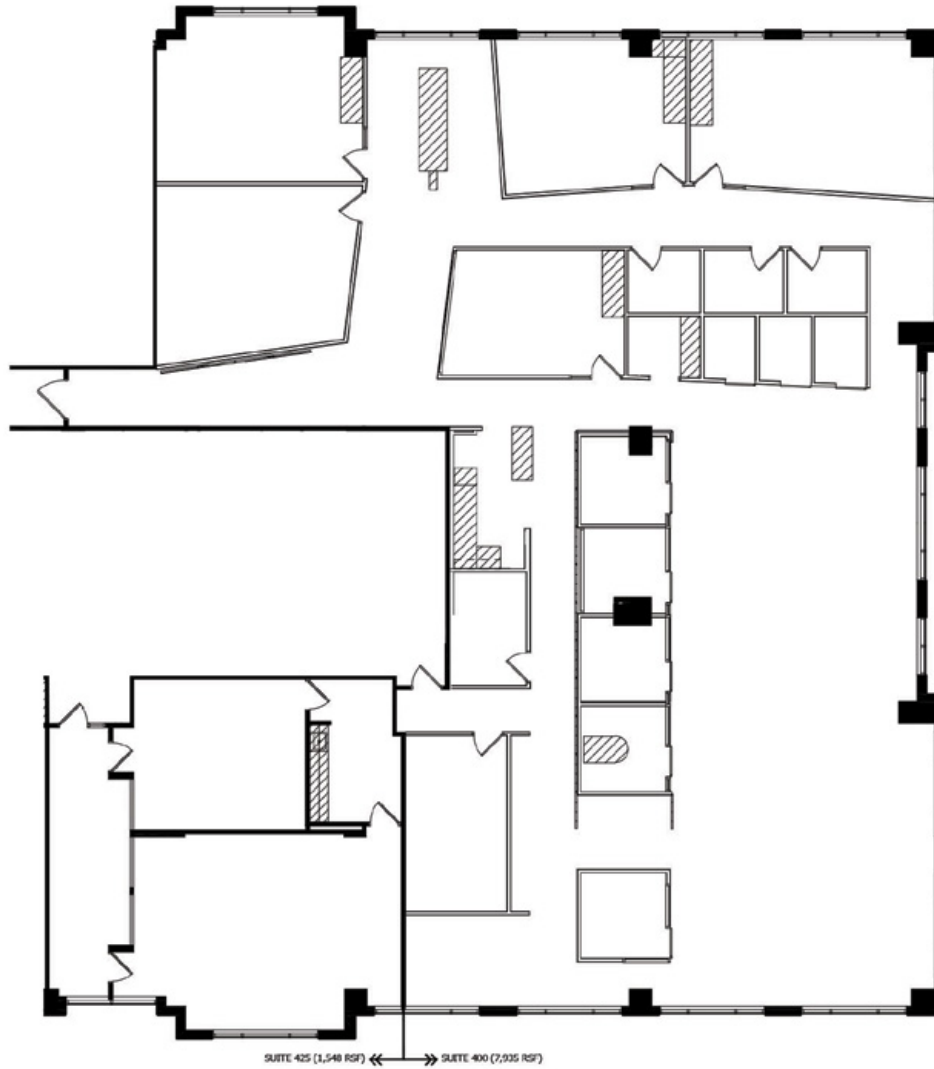
CENTENNIAL LAKES III

3601 West 76th Street

Suite 190 | 4,516 sf



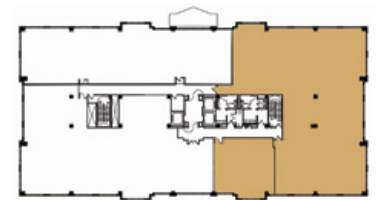
KEY PLAN - 1ST FLOOR



CENTENNIAL LAKES III

3601 West 76th Street

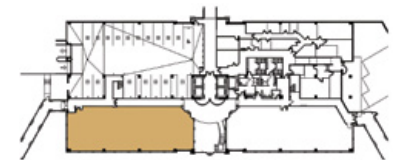
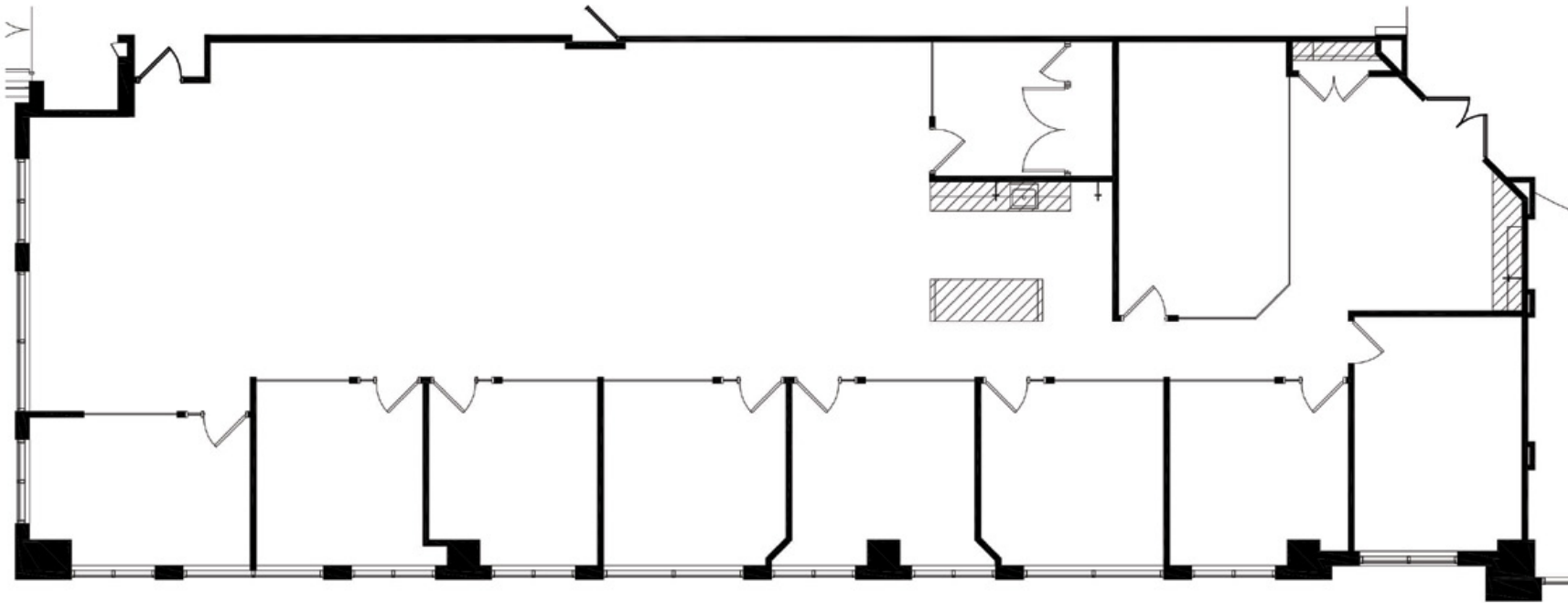
Suite 400 | 9,483 sf



KEY PLAN - 4TH FLOOR

CENTENNIAL LAKES IV
7650 Edinborough Way

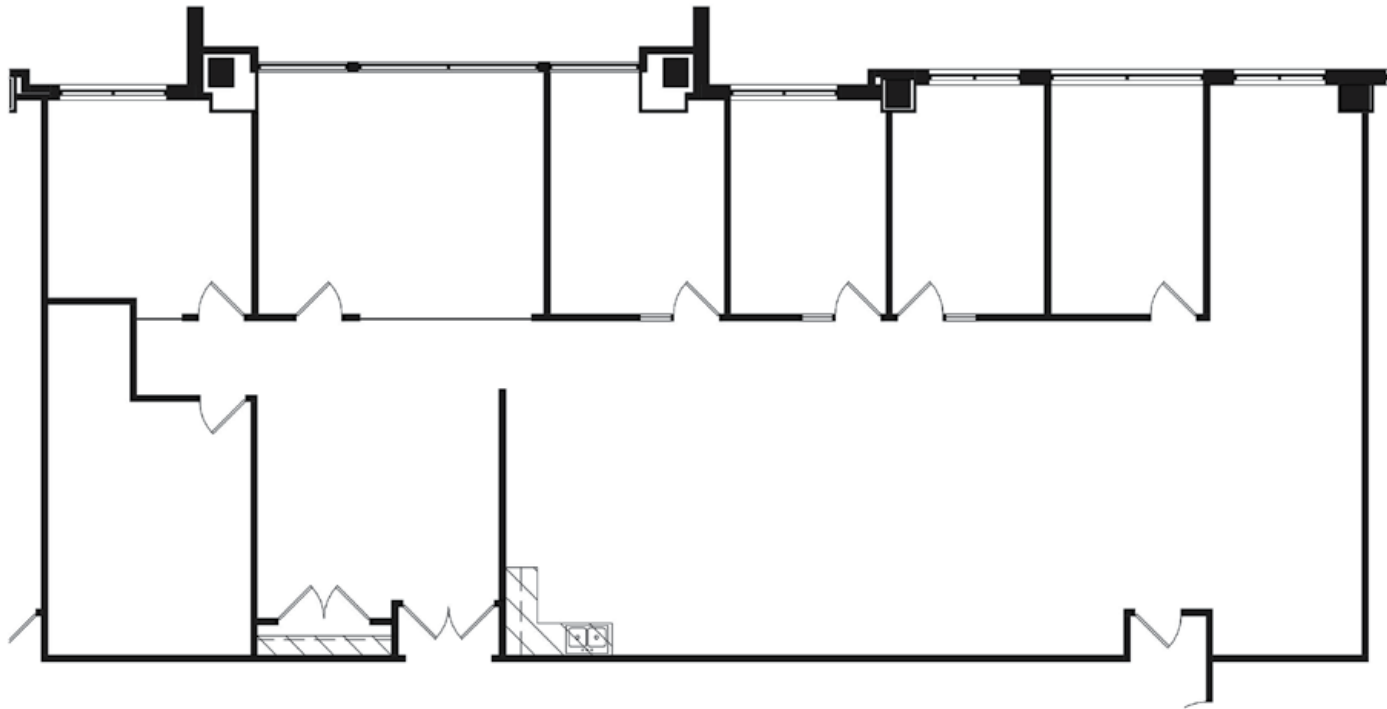
Suite 60 | 4,540 sf
(avail. 3/1/2024)



KEY PLAN - LOWER LEVEL

CENTENNIAL LAKES IV
7650 Edinborough Way

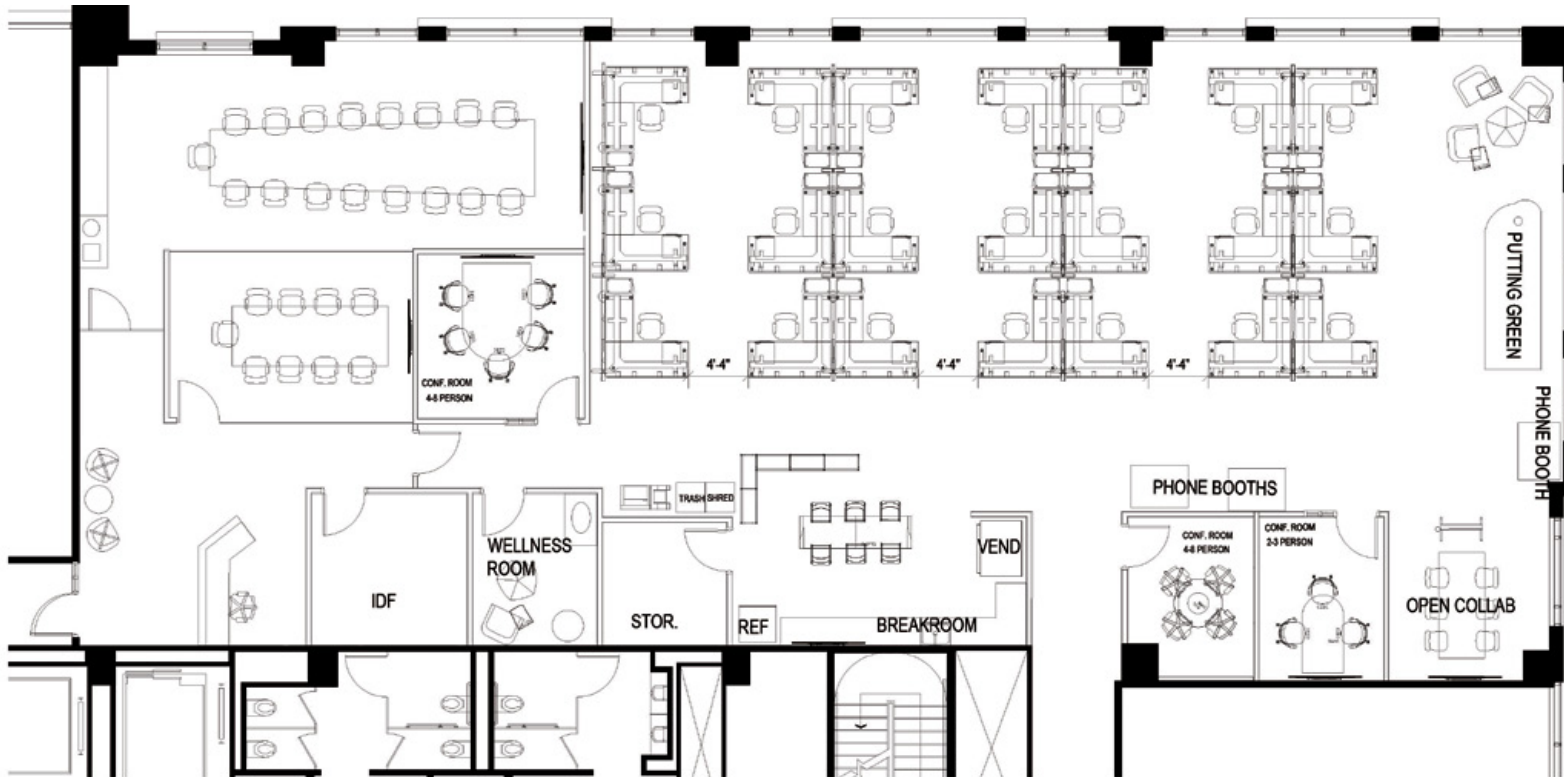
Suite 250 | 3,938 sf



KEY PLAN - 2ND FLOOR

CENTENNIAL LAKES IV
7650 Edinborough Way

Suite 645 | 5,883 sf
Spec Suite



Spec Suite Furniture Available

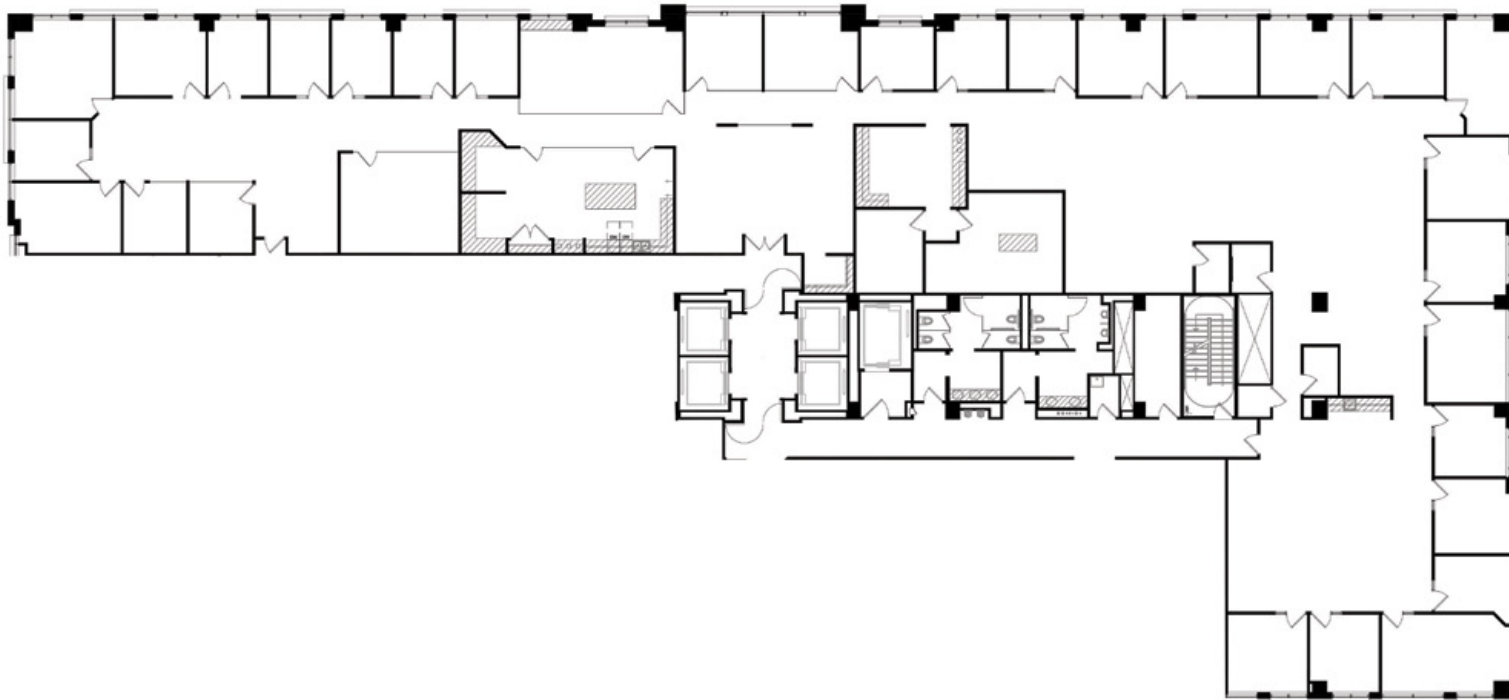


KEY PLAN - 6TH FLOOR

CENTENNIAL LAKES IV

7650 Edinborough Way

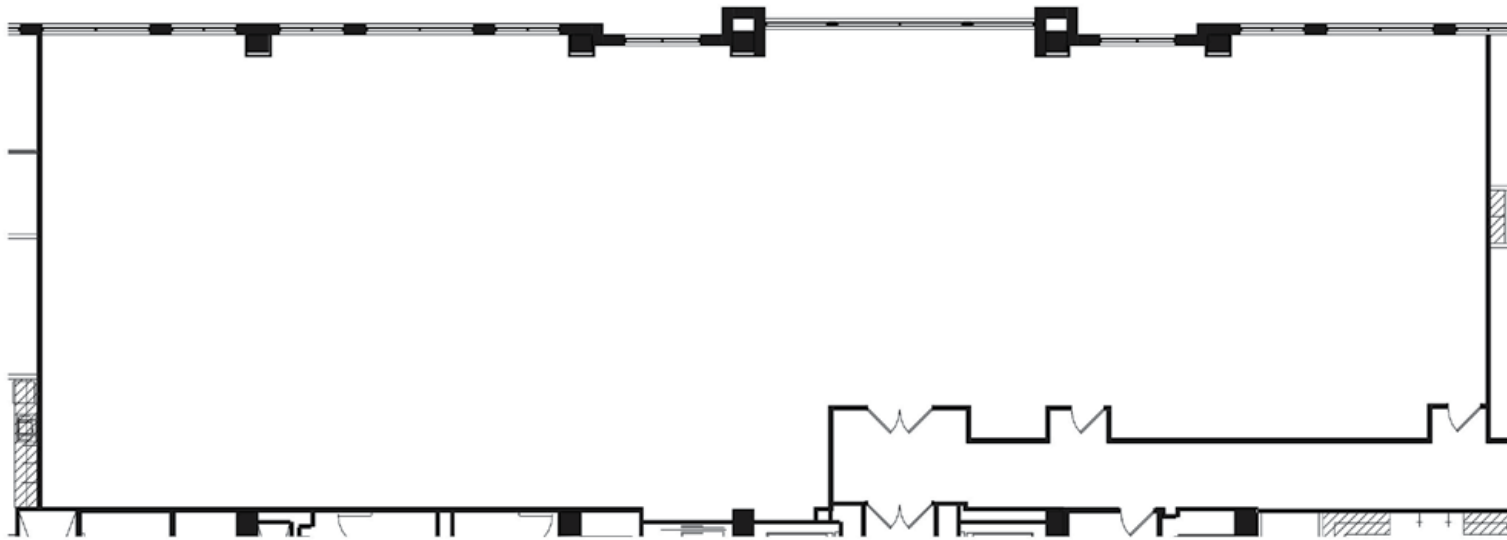
Suite 725 | 14,632 sf
(avail. 5/1/2024)



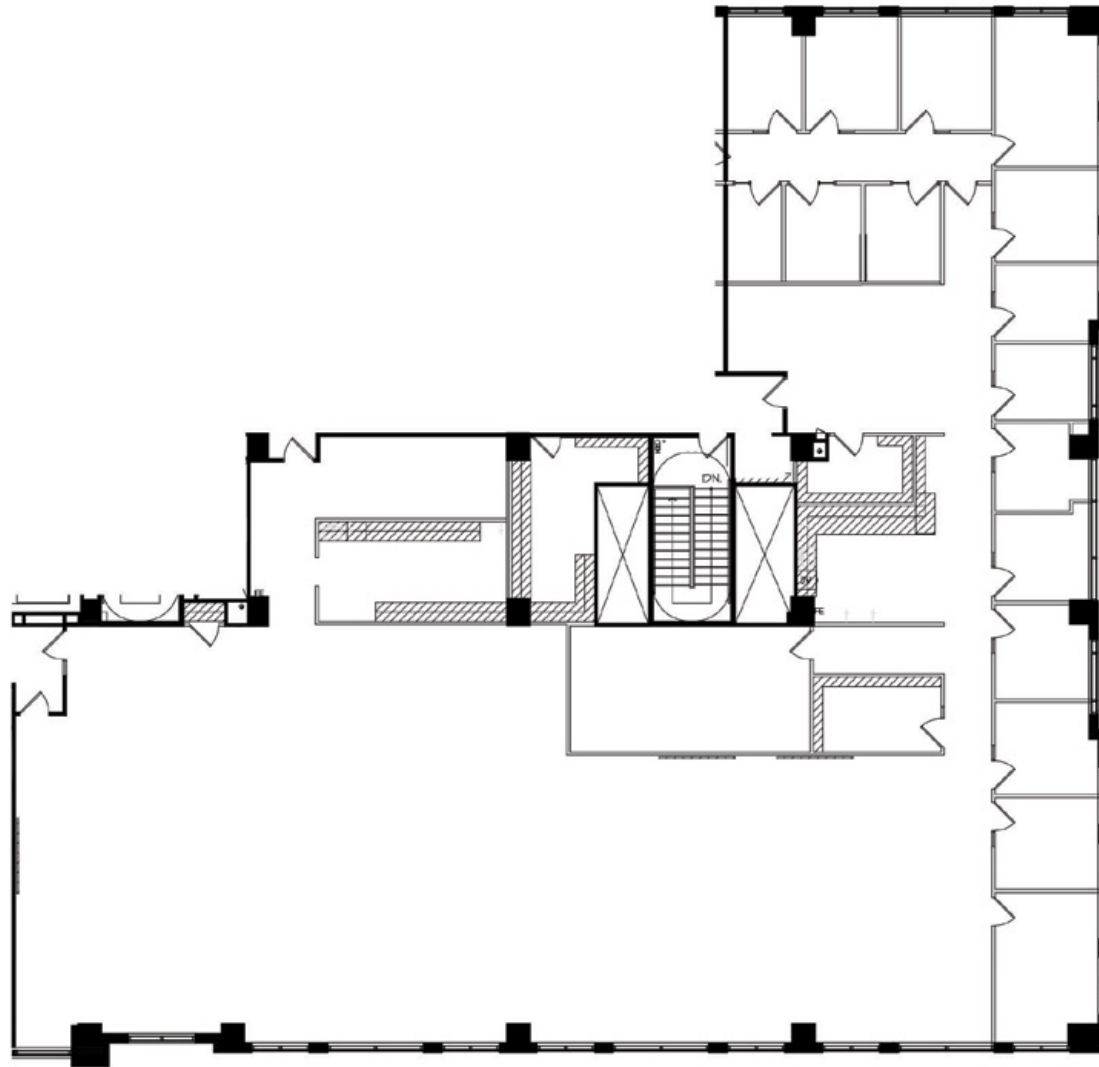
KEY PLAN - 7TH FLOOR

CENTENNIAL LAKES V
3600 Minnesota Drive

Suite 750 | 6,455 sf

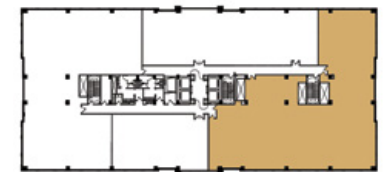


KEY PLAN - 7TH FLOOR



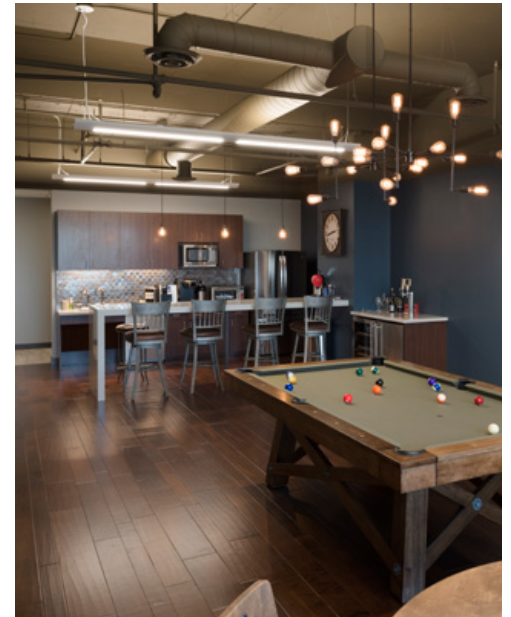
CENTENNIAL LAKES V
3600 Minnesota Drive

Suite 850 | 9,694 sf



KEY PLAN - 8TH FLOOR







centenniallakes.com